

ENiGMA

How Can it Work?

Where does scale come from?

How can frequencies both prevent and remove scale?

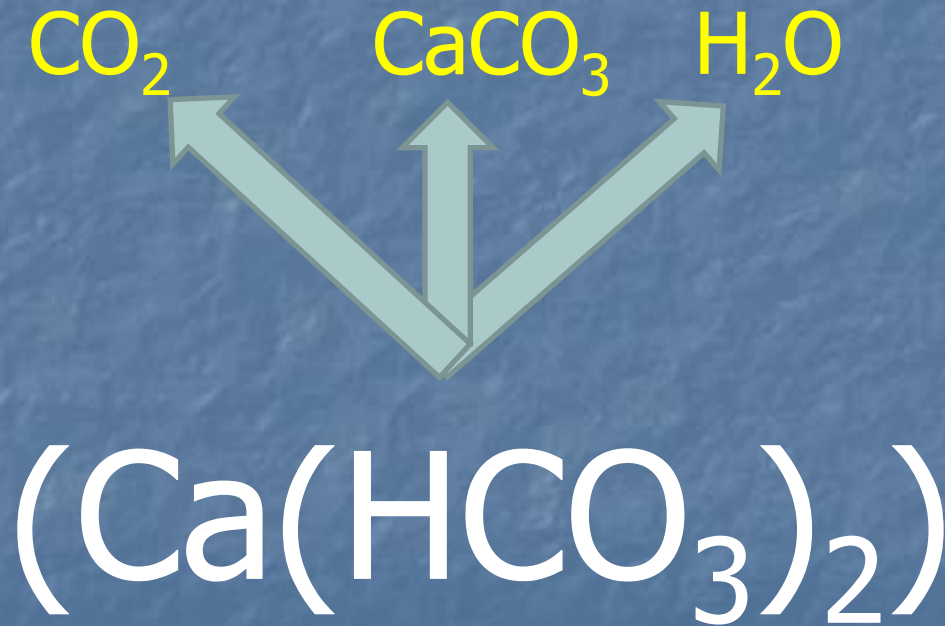
It's simple CHEMISTRY !

How Does Calcium Carbonate (Limestone) Get Into a Water System

- Rain (H_2O) absorbs (CO_2) to form:
 - Carbonic Acid (H_2CO_3)
- When it contacts Limestone (CaCO_3)
dissolves it to create:
 - Calcium bicarbonate ($\text{Ca}(\text{HCO}_3)_2$)

How Does Calcium Carbonate (Limestone) Get Into a Water System

- Heat drives out CO_2 causing:



How Does Calcium Carbonate (Limestone) Get Into a Water System

- Heat drives out CO_2 resulting in:

Limescale (CaCO_3) crystal forming on heated surface



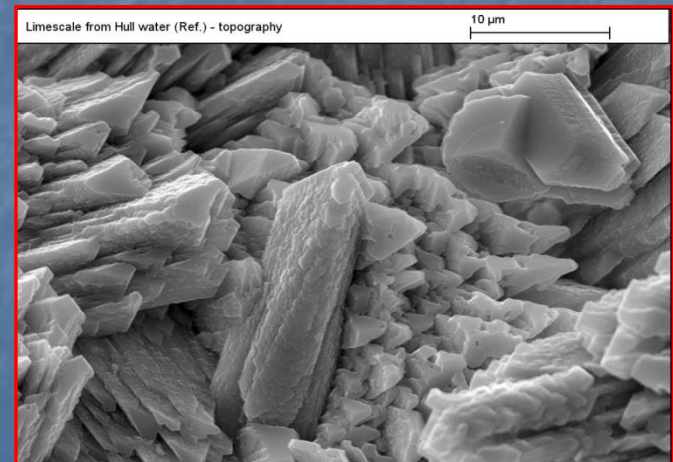
How Do Frequencies Prevent and Remove Limescale

Energy agitates water molecules driving out CO_2 causing an identical reaction

BUT CaCO_3 forms in the bulk of the water

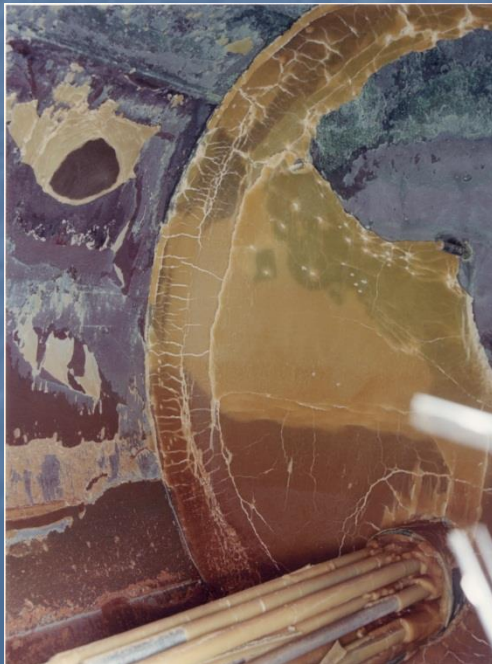


Instead of



How Do Frequencies Prevent and Remove Limescale

Released CO_2 & H_2O again forms a weak carbonic acid (H_2CO_3) which again dissolves calcium carbonate (just as nature did)



← From this
To this →
In <6 months





ENIGMA

LIMESCALE MANAGEMENT
s y s t e m

Does it with **FREQUENCY**